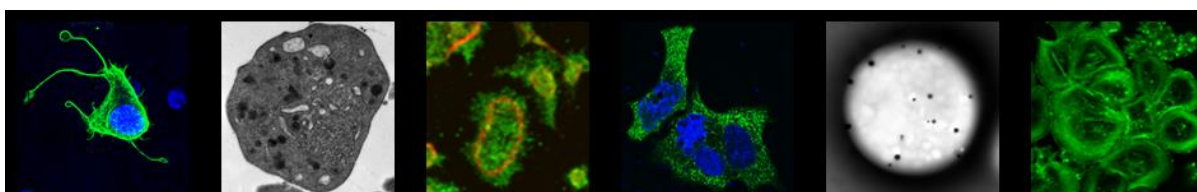


The Platelet Society Factsheets

Platelet function disorders

- o This series of Factsheets provide an easily understood overview of the known forms of platelet function disorders for patients and family members.
- o Information is available on all of the major forms of platelet function disorders on the internet and in scientific publications. However, many of these use complex scientific terms and it is difficult to compare one disorder to another because of differences in content. The Factsheets provide a brief summary of each disorder in a unified format enabling comparison between disorders.
- o The Factsheets are compiled by UK based scientists and clinicians on behalf of The Platelet Society.
- o The following factsheets are available (Jan 2018):
 - ADP P2Y12 receptor disorder
 - Bernard Soulier syndrome
 - FLI-1 mutations and Paris-Trousseau syndrome
 - GFI1B-related thrombocytopenia
 - Glanzmanns Thrombasthenia
 - Grey Platelet syndrome
 - Hermansky-Pudlak syndrome (HPS)
 - MYH9-related disorder
 - Runx1 mutations and familial platelet disorder
 - Schlafen14 disorder
 - Wiskott-Aldrich syndrome and X-linked thrombocytopenia
 - Life stages at which platelet function disorders affect females and males
- o These factsheets are intended for general medical information only and should not be considered medical advice. Specific concerns or questions should be directed to your doctor or other professional healthcare provider. Further information on this can be found in the medical disclaimer on our website.

The Platelet Society 2018



Supporting Research and Education of Platelet Related Diseases

www.plateletsociety.co.uk

Registered Charity Number: 1172202

Registered Address: Office 7, 35-37 Ludgate Hill, London, EC4M 7JN.